

### APPLICATION

Storm SLGR 1250X passed professional testing and its feedback resulted in an amazing outcome. Now let us take a close look at the unit's specification and features. Storm SLGR 1250X has an extremely driving water removal capacity which makes the machine the authorized one for restoration needs. It features great COP at 2.66L/Kwh, With a huge capacity of 125 PPD at AHAM RH, while the current draw is 8.1 amps. Installation flexibility makes the unit ideal for almost any application. No conventional dehumidifier can perform as efficiently and effectively for water damage restoration as Storm SLGR 1250X. It is the best choice for all urgent after-flood restoration tasks for dampness remove and early prevention of mold growth. Its wide applications include warehouse, shops, storage areas, industrial institutions, and garage applications, etc.

### Precooling Circuit



**Patent Pending**

### Dehumidifier



Drain Pipe  
19.6ft

Drain Height  
19.6ft

Built in Pump

Ground

- |                     |   |                   |   |
|---------------------|---|-------------------|---|
| Flood & Restoration | ✓ | Drying Furnishing | ✓ |
| Carpet Cleaning     | ✓ | Offices           | ✓ |
| Basements / Cellars | ✓ | Laboratories      | ✓ |
| Laundries           | ✓ | Tradesmen         | ✓ |
| De-Flooding         | ✓ | Garages           | ✓ |

### FEATURES

- ✓ CE, CETL
- ✓ Rotary Compressor
- ✓ More Thorough, And More Quick
- ✓ Ducting Options
- ✓ Condensate Pump
- ✓ Easy Handling
- ✓ Water Full Protection
- ✓ Environmental R410A Refrigerant
- ✓ Automatic Humidistat Control
- ✓ Memory Starting
- ✓ Washable Air Filter
- ✓ Large Diameter Wheels
- ✓ Rotational Moulded Body
- ✓ Cable / Hose Wrap
- ✓ Low Temperature
- ✓ Quick Connection to Cable/Hose

### SPECIFICATIONS

- Power: 115 V/60Hz
- Current: 8.1 Amps
- COP: 2.66 L/Kwh
- Size For: Up to 3000 sq.ft
- Filter: MERV - 8 Filter
- Air flow: 300 CFM
- Sound Pressure Level: < 60 dBA
- Refrigerant: R410A
- Wheel: 2 Wheels
- Draining: Condensate Pump
- Functioning Temperature: Range 33-110 °F
- Functioning Humidity Range: 35~95%
- Capacity: 125 PPD at AHAM
- Weight: 77 lbs (35 KG)
- Dim (L×W×H): 29"×20.7"×19.7" (740×527×500mm)
- Loading quantity: 20":124 Sets / 40":280 Sets / 40"HQ :350 Sets

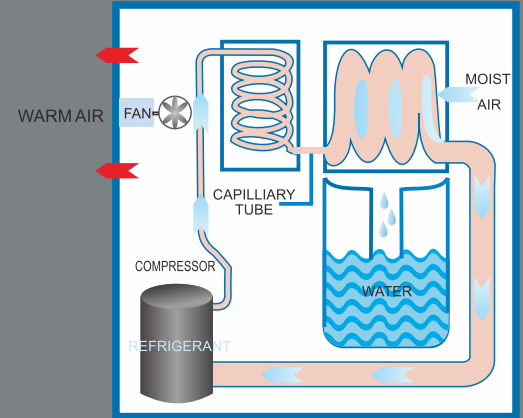
# Storm SLGR 1250X

## Commercial Dehumidifier



### WHY DEHUMIDIFY?

- Can effectively prevent household items, food, medicine, and books get moldy.
- Can effectively protect household appliances, computers, cameras and other instruments from moisture damage.
- Can effectively prevent the Prolonged humidity in a crawl space or basement which will lead to moisture and rot damage in the structural wood in your house.
- Can effectively prevent the house from pest infestation
- Can effectively avoid excessive humidity in a space where it is easy for mold, and where to develop mildew and fungi to thrive.



### WHAT CAN WE BENEFIT FROM A HIGH COP DEHUMIDIFIER?

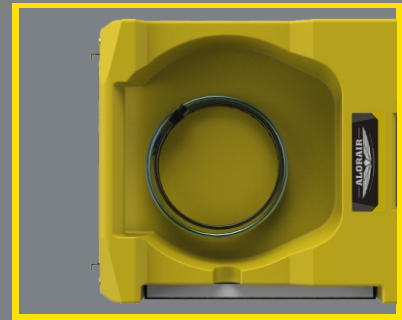
Alorair High COP Dehumidifiers are affordable solutions to your humidity problems. This investment in indoor air quality and inner comfort can be paid back by a few year's energy savings. Customers can save up to \$250 per year in energy cost with dehumidifiers working for their families! And that doesn't include the savings from using thermostats instead of air conditioning. Once you are able to maintain a consistent relative humidity of 50% or less, you will no longer have to keep the thermostat at low, uncomfortable temperatures once used in an effort to control humidity.



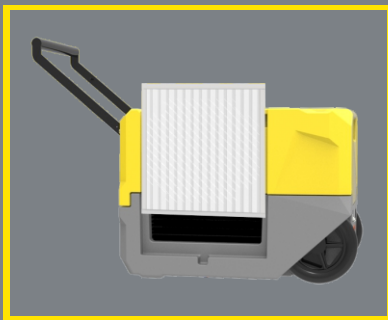
**LCD Display**



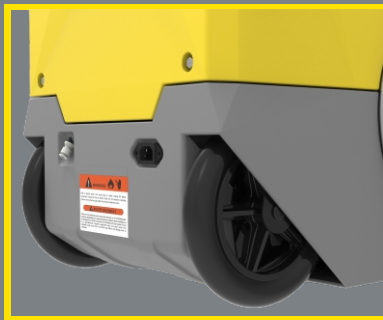
**Wifi/App**



**Easy Cord and Hose Storage**



**Easy Filter Access**



**Fold - Down with Wheels for Transport**



**Superior Stacking**

This is a very compact dehumidifier that is produced for drying restoration. This unit features a portable design for easy transportation. Its stackable design can not only save the flood restorer more space but also make more numbers of the units that have been transported to the destination for after flood restoration tasks.

As for the tough environment that flood disasters might have, Storm SLGR 1250X is designed with rugged rotomolded housing which is of high-quality industrial material. It is rugged enough to endure severe collision and corrosion found in water damage restoration and construction.

As the unique design compared with others, we have the humidity sensor in bypass air design which makes the short-cycling go away and creates quick access to the pump and main board. Customers can do it by themselves and service become easy. Preassembly makes the installation process simple, thereby it reduces the overall installation and project cost.

Storm SLGR 1250X is leading the industry by introducing epoxy coated coils. This new feature will extend the life of the coils, providing protection in corrosive environments and maintain the coil's heat transfer ability over the life of the coil.